

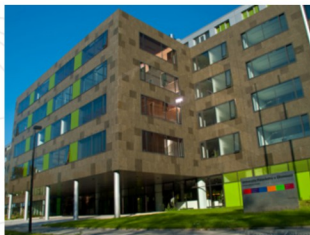


XXV. International Go tournament – qualification for Czech Championship 2017 and part of Czech national team and individual league (Gobanliga)

January 28th - 29th, 2017



Palacký University
Faculty of Science
17. Listopadu 1192/12
771 46 Olomouc
<https://mapy.cz/s/nKZU>



Organizer: [Go club Olomouc](#) in cooperation with
[Palacký University in Olomouc](#) - [Faculty of Science](#) and
[Czech Go Association](#)

Tournament Director: David Cigánek

January 27th	17:00 – 20:00	registration
January 28th	08:00 – 10:00	registration
	09:30	opening ceremony
	10:00	1 st round
	14:30	2 nd round
January 29th	18:00	3 rd round
	09:00	4 th round
	13:00	5 th round
	16:30	prize-giving ceremony

Tournament system: even games, MacMahon, 5 rounds, komi 6,5. Basic time limit 75 min. + byoyomi 15 moves per 5 min or 3 x 30 sec per move (depends on the kind of clocks). Unclassified players will obtain the rank of 20-kyu (or higher after the consultation). There are no age, performance or membership limitations of participation. Director of the tournament has the right to make some changes in the system or schedule, if it's needed.

Placement criteria: MM, SOS, SOSOS, mutual game



Contact:

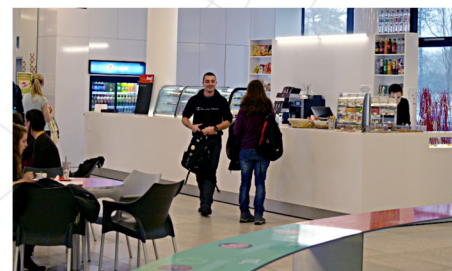
David Cigánek, [University Botanical Garden](#)
phone +420 585 634 832, cell-phone +420 733 690 498
e-mail: david@ciganek.net

Financial prizes for the best five players (CZK 5 000 (cca 185 EUR), CZK 4 000, CZK 3 000, CZK 2 000, CZK 1 000) and for players with five or four wins (600 CZK and 400 CZK). **Material prizes** for the best eight players, for all unbeaten players, then for the best of women, single digit kyu, double digit kyu, player under the age of 12 and the best 20 kyu player. All above mentioned champions have to win at least three games and attend the prize-giving ceremony to receive their prizes.

Entry fee for players [registered online](#) until **January 20th**:

- players with rating (GoR) higher than 2350 free
- members of [EGF national go associations](#), 20 kyu players CZK 200
- others CZK 300

Entry fee is paid cash (CZK) on the registration desk only. Players under 15 yrs. have 50% discount, in case of on-time registration. All demands for discounts have to be proven if asked. Players registered after **January 20th** pay extra charge of CZK 100.



Refreshment: good quality snack bar and three vending machines on the playing site plus wide variety of restaurants and bars nearby with prize categories and cuisines of all kinds.

Internet connection: EDUROAM university WiFi network

Accommodation is possible to book at [student dormitories](#) of Palacký University right next to the playing site, or some other. There are variety of hotels nearby. It's also possible to sleep in the dormitory of Youth centre with own sleeping bag, also very close to the playing site - still in negotiations, will be confirmed until the end of registration.

Don't forget to check our event on Facebook !

<https://www.facebook.com/events/1216793871721594/>



How to reach Olomouc

From Prague: Trains are running almost every 20 minutes. Three companies with all kinds of ticket-prices, usually starting on about EUR 5. Takes a bit more than 2 hours.

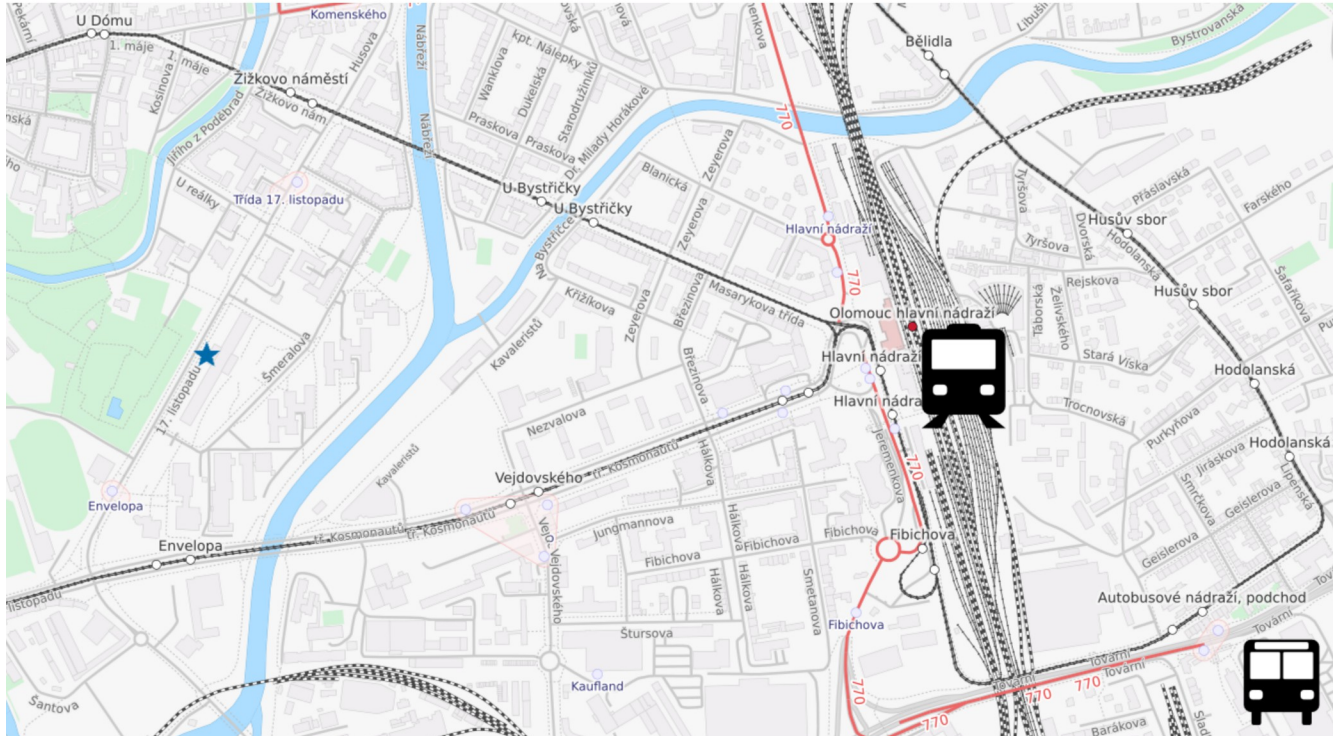
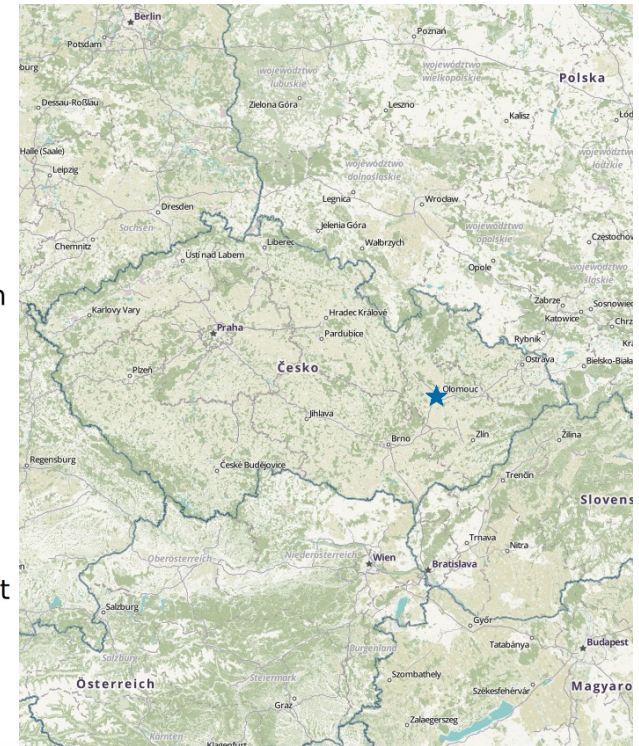
From Ostrava (or from the direction of Poland): Trains are running every hour, also three companies. Tickets starting on EUR 3. Takes less than an hour.

From Bratislava or Budapest: This is a bit more complicated but also comfortable. Take a train to Breclav (on Czech borders), it's easy by the corridor Budapest (takes 3 hours) – Bratislava (less than an hour) -> Breclav. Should cost about EUR 10-15, if bought on time. Then take another train (Rx - fast train) to Olomouc, which runs every two hours, takes one and half hour and cost about EUR 5.

From Vienna: Same way – go to Breclav (takes one hour and also costs about EUR 10-15) and then transfer to the Rx train to Olomouc (see the Bratislava/Budapest route).

It is also possible to go by one of many yellow RegioJet buses (former Student Agency) with a change in Brno, from all above mentioned destinations (Prague, Ostrava, Vienna, Bratislava or Budapest). It could be even cheaper and more comfortable than the train, but it takes longer. However, there is an advantage for people coming from Vienna airport, because the bus stops right there.

In case of problems, feel free to contact the organizer for finding the transport tailored to your needs.



Transportation in Olomouc

Playing site is in comfortable walking distance from both the bus (25 min.) and railway station (15 min.), so as from the historical centre of the town (10 min.). You can also utilize public transport by tram from the railway station (lines 1, 5 or 7 to the stop "Envelopa") or from the bus station (line 4 to the railway station ("Hlavní nádraží") and change to 1, 5 or 7 there). Ticket vending automats are available on both the stations.

Payments in CZK (czech crowns, Kč)

You can find many ATM's throughout the whole town, so there is no need to seek for exchange offices. Euros (except of the higher denomination banknotes) are also accepted in larger markets (Albert, Lidl, Tesco...) - they will return you cash in CZK back if you make some purchase there.